
KINGSTHORPE COLLEGE

PROSPECTUS

YOUR JOURNEY STARTS HERE



Kingsthorpe College

ASPIRATION | RESPONSIBILITY | RESPECT | CARE

EVERYTHING IS POSSIBLE

KINGSTHORPE COLLEGE



WE WILL ACHIEVE THIS THROUGH OUR CORE VALUES OF
Aspiration, Responsibility, Respect and Care.

THESE VALUES WILL BE SHOWN DAY TO DAY WHEN WE
Dream Big, Work Hard and Stay Humble.

A note from our Headteacher



Dear Parent,

Thank you for attending our virtual Open Evening and giving us the opportunity to share Kingsthorpe College with you. We know how important choosing a secondary school for your child is, and whilst we are unable to host an Open Evening in our usual way, we hope to give you a flavour (albeit virtually!) this evening of what you can expect from us. More importantly, we want to share with you our values and beliefs, so that you can be confident that Kingsthorpe College is the kind of school which is dedicated to ensuring that we make a difference, in any way that we can, to you and your child.

For us, high quality relationships are at the heart of everything that we do. We want our young people to be happy, confident, curious, and resilient learners who are determined to always do their best. We know that this can only happen if relationships, built on trust and mutual respect, are central to everything that we do. That's why we will start our partnership with you as soon as your child has been allocated a place with us. We believe that when young people feel safe and secure, everything is possible, and we are committed to doing our very best to make sure that we unlock the potential in everyone.

We value hard work highly and we have uncompromising expectations in relation to this. We want all our young people to ask themselves just one question at the end of every day – was I better today than I was yesterday? So whilst passing exams and gaining the necessary qualifications to take that next step, is hugely important, we are equally passionate about providing your child with opportunities to develop their character. We are proud of the extracurricular opportunities that we can provide, and we work hard to give our students plenty of opportunities to develop their confidence and creativity – both in and out of lessons.

If you choose Kingsthorpe College, you will be joining a team. The Collaborative Academies Trust, our governors, and our staff, are all incredibly proud to work with us at Kingsthorpe College, and we are all committed to constantly improving things for the young people in our care. The calibre of our staff is second to none, and we can promise you that your child will be challenged, supported, and inspired daily in all aspects of their school life. You can also be assured that we will always give 'that little bit extra'. It's not just what we do at Kingsthorpe College, but how we do it that makes the difference. Kingsthorpe College 'feels' different. There is a definite atmosphere of energy, anticipation, and excitement. Everyone who visits us comments on it, and we hope you will still be able to experience this yourselves during our virtual tour.

Whilst we are becoming the first choice for many families across Northampton, and are now oversubscribed upon entry, we are far from complacent. We will continue to strive for excellence in all that we do, and we are excited and optimistic about what the future holds for the young people and community which we serve.

We look forward to making that journey with you as we continue to dream big, work hard, and stay humble.

Yours sincerely,

A handwritten signature in black ink that reads "JH Giovanelli".

Jennie Giovanelli

A note from the Governing Body

Community Governors:

James Thomas
Deborah Mattock

Parent Governors:

Balvir Singh Aujla
Katie Johns
Fabrizio Pilotti
Karolina Antas

Headteacher Governor:

Jennie Giovanelli

Clerk:

Graham Lampard

Staff Governors:

Helen Noble
Elishia McDermott

Co-opted Governors:

Vanessa Bradley (Vice Chair)

Trust Governor:

Jane Curle (Chair)

The Governors of Kingsthorpe College are very proud to represent you and your opinions. We believe in the power of harnessing everyone's talents across the community in order to achieve outstanding outcomes. We are a very dedicated team of individuals who are totally committed to making sure every young person at Kingsthorpe College gets the best education possible. We hope you will support us in the leadership of our College and will contribute to its continued success.

Full Governors' meetings are held four times a year but much work is conducted through sub-committees, which meet at least twice a term with senior leaders. This enables us to keep all aspects of the College's operation under review and to keep building on our strengths.

In a prospectus such as this, we can only touch upon the many areas of the College that we are responsible for. However, we have very detailed policies covering all aspects of College life and should you wish to have copies of any policy document, please contact the College via lindsay.rayment@kingsthorpecollege.org.uk.

All Governor correspondence should be addressed to:

The Clerk of Governors,
Kingsthorpe College,
Boughton Green Road,
Kingsthorpe,
Northampton
NN2 7HR.



Admissions Criteria



The choice of secondary education for your child is such an important one as it will affect the rest of their life. Consequently, parents are extremely eager to get their child in to the school of their choice. That said, each school only has a specified number of places that can be allocated (PAN – Pupil Admission Number). The PAN at Kingsthorpe College is 240 students per year group. Once we reach that number, we cannot accept any additional admissions unless through a successful appeal.

All applications for admissions to Kingsthorpe College are done centrally through the Local Authority and follow the protocol set out below:

Kingsthorpe College – Admissions Policy for 2021 intake

Kingsthorpe College will admit 240 students in Year 7. The College will allocate places to students with a statement or an EHCP where the College, after consultation with the Local Authority, has been named on the statement/EHCP as appropriate provision.

The admissions policy for Kingsthorpe College follows the Co-ordinated Admission Scheme for Secondary Schools in the Area of Northamptonshire. Parents will need to complete a Common Application Form and submit it to the Local Authority.

Where the College is oversubscribed places will be allocated using the following criteria:

1. **Children in public care (looked after children) or previously in public care** (see full definition below).
2. **Children of staff at Kingsthorpe College** where any of the following conditions are met:
 - The member of staff has been employed at the school for two or more years at the time at which the application for admission to the academy is made, or
 - The member of staff is recruited to fill a vacant post for which there is a demonstrable skill shortage.
3. **Up to 24 students with a demonstrated particular aptitude in the visual or performing arts** (art, dance, drama or music). Students will be selected through workshops. All applicants will be scored across a range of skills within their area of aptitude. If you wish your child to be considered for a place under the criterion aptitude for visual or performing arts, please complete an 'Aptitude Admissions' form and return it to Kingsthorpe College. Please check the college website or call for confirmation of the workshop dates.
4. **Students who live in the postcode areas** NN2 8, NN2 7, NN3 6.
5. **Students who will have an older brother or sister continuing at Kingsthorpe College at the time of admission of the younger child** (see full definition below).
6. **Other students.**

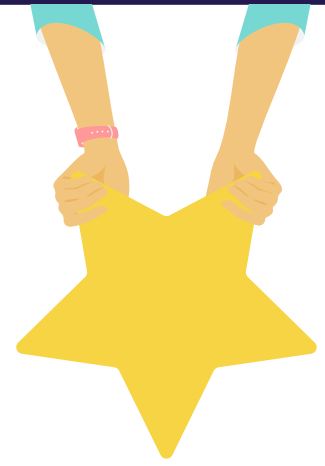
The Headteacher will ensure that:

- students are admitted in accordance with this policy
- where places are available, students are admitted in accordance with the agreed priorities

The Governing Body will ensure that:

- the admission arrangements are reviewed annually and consultation takes place on changes with all other admission authorities and the Local Authority
- the admission arrangements are made available to parents and potential parents
- the net capacity formula is reviewed annually and proposed variations discussed with the Local Authority.

Our Values and Aims



Aspiration, Responsibility, Respect, Care

- To significantly stretch the performance and achievement of every student.
- To provide an exciting curriculum that makes learning enjoyable.
- To develop in each student a positive self-image and sense of worth.
- To promote high aspirations and high expectations.
- To develop respect for, and the recognition of, the needs of others.
- To enable each student to make informed decisions and exercise their rights and responsibilities.

To achieve all of this we will:

- Work in close partnership with students and their families.
- Engage effectively with other services in meeting all students' needs.
- Sustain an ordered community where expectations are consistently applied.
- Encourage students to take responsibility and develop leadership skills by working with each other.
- Promote enrichment activities which build on the curriculum and develop personal qualities.

Our Ethos and Culture

We are passionate about providing opportunities for all our students to achieve artistic, athletic, and academic excellence. In addition to ensuring that all our young people achieve their potential in these areas, there is also a genuine commitment to respect for individuals which is demonstrated in the daily life of Kingsthorpe College. One of the first things you notice when you walk into College, is how friendly everybody is to each other – how frequently people smile, take an interest in other people, and find something positive and encouraging to say. We always take the time to celebrate success.

All we can ask from our students is that they do their best - and we value hard work, determination, and optimism highly. We believe that people choose their own behaviour, and we work hard to make sure that our young people make the right choices. Students at Kingsthorpe College appreciate the fact that we are clear in our expectations about what this entails.

Kingsthorpe College is also a College which understands that the students' experience should be at the heart of everything we do. We have a thriving student voice, led by our Head Student Team and it is really important to us that our young people feel that this is their College, and that they are just as much a part of the Kingsthorpe College team as our staff.

Finally, we believe in clarity of communication, and the power of feedback. We always welcome open and honest dialogue between all those involved in and with the College. We are committed to a restless excellence which can only be achieved through regular feedback, and you will always find us receptive to this.

Our Students

We work hard at involving students in the life of the College. Student leadership, involvement, and ownership are major contributors to achievement and progress and are evident in many ways. We try and keep it central to everything that we do.

The Student Leadership Team provides students with numerous roles and experiences of a wider College nature. This not only gives them the chance to blossom as individuals, but also enables them to really make a difference to our College.

Our Senate (College Council) and our Student Ambassadors lead an important and active role in the life of our community. Each year group elects representatives who meet regularly as a senate, and each year group is represented on a year group council that meets half termly. Ambassadors also represent many aspects of College and community life. Students are given the opportunity to raise issues they see as important and minutes of meetings are kept and acted on. This enables students to be involved more closely in the future development and organisation of the College, and to gain experience of committee work and public service.

Our Staff

The key to the success of any workplace lies in the quality of the staff. Kingsthorpe College prides itself on having highly qualified, highly motivated professionals whose flair and imagination inspire young people in every way.

We are a staff who work well together. Our strength stems from the knowledge that we are all part of the same team; our success as a College derives from us all working to a common purpose in an open and collaborative way.

We know we are in a very privileged position to be able to work in a good school, and in such a positive environment with such wonderful young people and colleagues. We are committed to doing the very best we can for every young person.



Our Curriculum

Kingsthorpe College offers a wide-ranging curriculum starting in Year 7 and progressing through to the Sixth Form. We are always trying to improve what we offer in order to meet the needs of each individual student. It is important to us that we have a challenging, connected, and creative curriculum which enables students to learn substantial subject specific knowledge, as well as learn how to engage in debate and form their own opinions about this content. Above all, we hope that by the time students leave us, they have the requisite knowledge and skills to play an active part in society and feel confident that they can take part in the great conversations of our time.



Whilst we maintain strength in the “academic” side of what we do, there is also a substantial “vocational” element available to students and we review our offer annually to meet the changing needs of both students and the wider society. Subjects which are currently available are:

Subjects	Year 7	Year 8	Year 9	Year 10	Year 11	Year 12	Year 13
Art/Fine Art	✓	✓	✓	✓	✓	✓	✓
Biology				✓	✓	✓	✓
Business Studies				✓	✓	✓	✓
Chemistry				✓	✓	✓	✓
Creative and Digital Media				✓	✓	✓	✓
Criminology						✓	✓
Computer Science				✓	✓	✓	✓
Core Maths						✓	
Dance	✓	✓	✓	✓	✓	✓	✓
3D Design	✓	✓	✓	✓	✓	✓	✓
Drama	✓	✓	✓	✓	✓	✓	✓
English Language/Literature	✓	✓	✓	✓	✓	✓	✓
Extended Project							✓
Financial Studies						✓	✓
French	✓	✓	✓	✓	✓	✓	✓
Further Maths						✓	✓
Games Design				✓	✓	✓	✓
Geography	✓	✓	✓	✓	✓	✓	✓
German	✓	✓	✓	✓	✓	✓	✓
Health and Social Care				✓	✓	✓	✓
History	✓	✓	✓	✓	✓	✓	✓
Hospitality and Catering					✓		
ICT/Digital Literacy	✓	✓	✓	✓	✓	✓	✓
Maths	✓	✓	✓	✓	✓	✓	✓
Music	✓	✓	✓	✓	✓	✓	✓
PE and Sports Studies	✓	✓	✓	✓	✓	✓	✓
Philosophy & Ethics	✓	✓	✓	✓			
Photography				✓	✓	✓	✓
Physics				✓	✓	✓	✓
PSHE	✓	✓	✓	✓	✓	✓	✓
Psychology						✓	✓
Public Services							✓
Science	✓	✓	✓	✓	✓	✓	✓
Sociology				✓	✓	✓	✓
Spanish				✓	✓	✓	✓
Textiles				✓	✓	✓	✓
Travel and Tourism				✓	✓	✓	✓

College Uniform

Kingsthorpe College uniform plays an important part in contributing to the ethos and values of the College. The wearing of our uniform allows students to identify with the College and demonstrates their pride in being a student at Kingsthorpe - both in the College and in the community. It is also practical, smart and reduces expenditure for parents and carers.

Main College Uniform

Black blazer with KC badge

KC clip on tie

Plain white collared shirt – buttoned to the collar (worn tucked in)

Plain black pullover or cardigan (optional)

		
Trousers	Plain black full length tailored trousers - with a crease down the centre leg.	Jeans style trousers ie. untailored. Leggings. Tracksuit bottoms. Tight skinny legged trousers.
Skirts	Plain black knee length skirt. Plain black opaque tights.	Stretch fabric fitted skirts. Very short or very long skirts.
Shoes	Plain black leather or leather-type flat soled shoes.	Trainers. Do not purchase trainer brands – Lacoste, Lonsdale, Adidas, Nike, Vans, Reebok. Pumps. Boots including 'Ugg' style fur boots. Ballet pump style 'dolly' shoes.
Outerwear	Plain and dark colour coats with no logos. Plain and dark woolly hats, with no logos, may be worn in winter but removed in the building.	Tracksuit tops. Hoodies. Baseball caps.
PE and Dance Kit	Compulsory Black shorts. Black sweatshirt. Black/gold rugby shirt. Black polo shirt. Trainers. White sports socks or black/gold socks. Leggings may be worn under shorts for dance.	Desirable Football boots. Shin pads. Black tracksuit bottoms. A towel.

Students are expected to change for PE and Dance in the PE changing rooms.
Students must wear College uniform on the way to College and leaving College.



College Expectations



Jewellery and Make-up

The wearing of make-up for College is not encouraged. If worn, make-up must be minimal and subtle (no bright colours). Nail varnish, if worn, must be natural or pale in colour. The wearing of jewellery, other than a watch and plain stud earrings, is not allowed on health and safety grounds.

Where students have pierced ears, a plain stud (without stones) may be worn – no more than one in either ear lobe. This pair of studs must be removed for PE/Games for health and safety reasons.

If students have piercings requiring them to wear additional jewellery, such as nose studs, extra ear studs, eyebrow studs, tongue studs etc., they will be told to remove them during the College day even if this means the piercing will close up. If worn for religious reasons, a request should be made in writing to the College and each case will be considered on an individual basis.

Hair

We do not permit extreme haircuts at Kingsthorpe College for health & safety reasons and because they can serve as a distraction to other children.

Kingsthorpe College students should have hair of a natural colour.

Clipped hair must be no shorter than a number 2 grade. Hair shaved in patterns or into a Mohawk style are not permitted.

Long hair must be tied up for sports/creative arts subjects.

Hair accessories should be discreet and black, white, navy or grey in colour.

Adherence

Students are expected to wear full College uniform at all times and abide by these expectations. If a student deliberately fails to wear the full College uniform, or the student contravenes hair or jewellery expectations, they will be removed from lessons and recreation time until the non-uniform item is rectified.

Whilst wearing Kingsthorpe College uniform, students are representing the College in the local community and any behaviour out of College whilst wearing our uniform, which falls short of our expectations and which brings the College's reputation into disrepute, may result in disciplinary action by the College.

Sixth Form Dress Code

The dress code for Sixth Form students embodies our belief that the appearance of our students should reflect the professional environment in which they learn, and their responsibility as role models. This is the same expectation as we have of our staff and the same dress code policy.

Starting at Kingsthorpe College

Starting secondary education is a big step for both students and their parents, so at Kingsthorpe College we work very hard to make this transfer as smooth as possible. We work closely with primary schools to ensure that there are good links between us, and we have a strong liaison programme with primary and secondary teachers working hand in hand.



To help with the transfer process, we hold an annual Open Evening in October for prospective parents and students to see us in action, however this year this will be held virtually. We also have a number of activities throughout the year which Year 6 students attend so that they get more familiar with their new surroundings and staff. When we know details of which students have been successful in gaining a place at Kingsthorpe College, we arrange visits to their primary schools. This enables our staff with responsibility for transition, to meet our new students and their teachers to discuss the weeks and months ahead and to make sure that we have all the information we need about individuals' progress, personal development, and any special needs.

In the summer term, Year 6 students who are lucky enough to be joining us in the September experience a full day with us to help them understand what life at Kingsthorpe College will be like. We also have evening meetings where we invite parents to meet tutors and discuss arrangements for the new term. There is also a very effective summer school, held over three days in August, to help bridge the gap for students.

Soon after your child has started at Kingsthorpe College, we arrange a meeting for parents and carers to meet with tutors to discuss how your child has settled in and to make sure that there is an opportunity for you to share anything with us before the first half term is over.

Pastoral Care

Strong, positive links between home and College will inevitably help children succeed. The focus of our pastoral structure is to support the development of all students towards achieving their potential as learners and as young people. We make sure that each young person is known and valued as an individual.

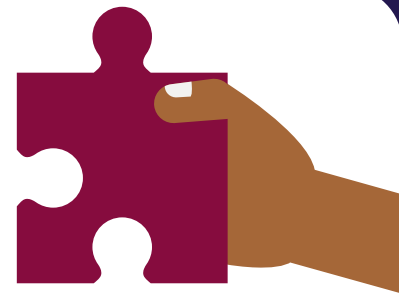
Each student is a member of a tutor group and has a personal tutor who helps them do well in their academic and social lives at College. Where possible, the tutor continues working with the tutor group from Year 7 through to Year 13, helping to provide stability, security and continuity of care.

If you wish to discuss anything about your child's progress with us, you are asked to contact your child's tutor or the Deputy Head of Year or Head of Year in the first instance.

If you have something of a confidential nature which you would like to discuss with a senior member of staff, please contact Miss D Eddy.

We will keep you fully informed and involved in all aspects of your child's learning and will work with you to make certain they are as happy and academically challenged as possible. The stronger and more mutually supportive our partnership is, the more successful each student will be.

Student Support



Special Educational Needs

We recognise that individuals have different learning and physical needs. Where a special educational need is identified, we seek to provide the most appropriate support we can for the individual to enable him or her to make the best possible progress.

Where it becomes clear that some adaptation of the curriculum or environment is necessary to promote success, we will do everything we can to support this through full discussion with parents and appropriate agencies.

We are committed to supporting and challenging every child to be the very best they can be, and will endeavour to find a way to meet every child's needs. If you wish to discuss your child's specific needs, please contact Mr David O'Leary.

Most Able

What is understood by most able?

The Council for the Curriculum, Examinations & Assessment (CCEA) has used the term most able to describe those students who are achieving or who have the potential to achieve a level substantially beyond the rest of their peer group inside their particular school. 'Most able' encompasses students who are able across the curriculum.

How are most able students identified?

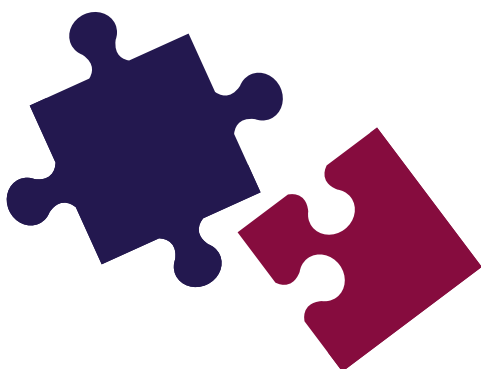
The decision as to which students should be considered as the most able across the curriculum is based on a review of students' prior attainment to identify students who have consistently shown the highest levels of performance in assessments, tests and / or examinations across the curriculum.

How are the most able students recorded?

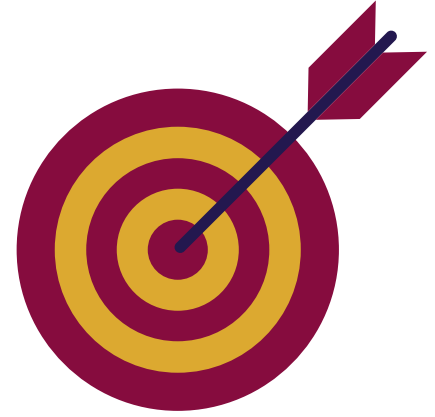
The most able students across the curriculum are identified in September of each academic year, and they are then invited to a launch event where the super-curricular programme for the academic year is shared with students and parents. The names are centrally recorded along with a record of the super-curricular programmes they have attended.

Most able students across the curriculum will be routinely monitored throughout the year, but will remain unchanged for each academic year until an annual review every September for each year group. Subject teachers will implement a variety of differentiation strategies to ensure that the most able are stretched and challenged in day to day lessons.

If you wish to discuss this aspect of our provision, please contact Miss Draper.



Attendance



Attendance is a high priority at Kingsthorpe College as we firmly believe that excellent attendance underpins student progress and achievement. We challenge all of our students to achieve above the **College target of 96%**, and we assume parental support in maintaining these high standards. We work closely with support services and, where necessary, the statutory services of Educational Entitlement in order to support any student in need.

It is important to note that over the past 3 years we have seen an increase in the amount of parents taking their child out of school for holidays during term time. Children have 192 days at school and 172 days on holiday. We implore you to take your holidays out of term time, which would therefore have no impact on your child's education. We also ask you to think very carefully about allowing your child to have the odd day off. It will impact upon their subject knowledge and they may fall behind their peers and struggle to catch up.

We understand and appreciate that there are occasions where illness or family crisis will impact on a student's attendance, and we will work closely with families to minimise disruption to learning. In cases of student absence, we ask that parents complete and submit a College request for student absence form, where advance warning can be given. We also ask that student absence is reported on the morning of absence through the MyEd parent app, or by contacting our student absence line, which can be reached on the College contact number, 01604 716106.

Personal Property

The safe keeping of all personal property and equipment is the responsibility of each student. All such property should be marked with the student's name. The College cannot accept responsibility for any personal property that may be lost, damaged, or stolen. Students are strongly encouraged not to bring anything of real value to school with them as it is not essential to their learning and merely becomes a distraction.

Students must assume responsibility for the proper care of books and equipment issued to them by the College.



Mobile Phones



Here at Kingsthorpe College we have a **zero tolerance** to mobile phones. The restriction for the student comes into effect from the moment the students enter the school gate at the start of the day and until they leave at the end of the day. This means that if they chose to bring their mobile to school, it must be switched off and placed into their bags until they leave at 3pm.

Emergency contact from students to parents/carers during the school day can be made either through a request to their tutor, via Reception or the Year Team offices at break and/or lunch. Where arrangements have changed for a visit or planned event, the organising member of staff will liaise with Reception to ensure parents/carers are contacted.

If a mobile phone is seen or heard by a member of staff, the member of staff will be required to confiscate it immediately and, at the earliest opportunity, take the phone to Student Services for secure storage (in a locked box). The phone will be kept securely until it can be taken to Reception. The mobile phone will only be returned to the student the following day on receipt of a letter or telephone call from parents/carers. The expectation will be simple – if it is seen or heard, it will be confiscated.

The Use of Bicycles

Students may travel to College on bicycles on the understanding that they are left on the College site at the student's own risk. There is an area outside of PE, using the student entrance, for bicycles to be parked and locked.

All students who wish to ride their bicycles to and from school must provide the school with written parental permission and have signed an agreement to abide by our Bicycle Safety Policy. We reserve the right to withdraw permission for a student to attend College on a bicycle if the bicycle is poorly maintained, unsafe, or poorly ridden, as per our policy.

Students are encouraged to wear the appropriate safety headgear whilst travelling to and from the College.

Complaints Procedure

The College will work very hard to support all of its young people and their families. However, we are not perfect and sometimes we can make mistakes. If you are unhappy about anything to do with the College, you should contact the school via lindsay.rayment@kingsthorpecollege.org.uk in the first instance. It is helpful if you can do this in writing.

The College will discuss your concerns with you and agree with you how it will be dealt with. If your concern is about the Headteacher or if you are not satisfied with the way the College deals with your concern, you should write to the Chair of Governors, care of the school, and she will address your concern herself on behalf of the Governing Body.

KINGSTHORPE COLLEGE

**EVERYTHING
IS POSSIBLE**

WE WILL ACHIEVE THIS THROUGH OUR CORE VALUES OF
ASPIRATION, RESPONSIBILITY, RESPECT AND CARE.

THESE VALUES WILL BE SHOWN DAY TO DAY WHEN WE
DREAM BIG, WORK HARD AND STAY HUMBLE.

Kingsthorpe College

ASPIRATION | RESPONSIBILITY | RESPECT | CARE



Kingsthorpe College, Boughton Green Road,
Northampton, NN2 7HR

01604 716106

www.kingsthorpecollege.org.uk



@KingsthorpeCollege1



@KingsthorpeC



QoE at Kingsthorpe College