

---

KINGSTHORPE COLLEGE

# POST 16 PROSPECTUS

YOUR JOURNEY CONTINUES HERE

---



**Kingsthorpe College**

ASPIRATION | RESPONSIBILITY | RESPECT | CARE



EVERYTHING IS POSSIBLE

# KINGSTHORPE COLLEGE

WE WILL ACHIEVE THIS THROUGH OUR CORE VALUES OF  
**Aspiration, Responsibility, Respect and Care.**

THESE VALUES WILL BE SHOWN DAY TO DAY WHEN WE  
**Dream Big, Work Hard and Stay Humble.**

# A note from our Headteacher



Dear Parent and Student,

Thank you for attending our Post 16 Open Evening and giving us the opportunity to share Kingsthorpe College with you. We know how important choosing a Post 16 provider is for you. We hope to give you a flavour this evening of what you can expect from us as you look to make the transition from main school into our Post-16.

Our Post 16 not only provides an extensive range of academic and vocational courses at Level 3 but also a personalised provision with excellent pastoral care. Our Post 16 team will work with you to support your next steps, whether that be continuing into higher education, apprenticeships or gap years. We pride ourselves on offering an inclusive all-round education combining academic rigour with extensive opportunities beyond the classroom. Furthermore, we are committed to providing you with a learning environment that will help you build a strong foundation for success in the future. Our recently refurbished Post 16 Centre has dedicated study areas, a large ICT suite, and social facilities. It is always staffed to guarantee you access to whatever you need.

If you choose Kingsthorpe College, you will be joining a team. The Orbis Trust, our governors, and our staff, are all incredibly proud to work with us at Kingsthorpe College, and we are all committed to constantly improving things for the young people in our care. The calibre of our staff is second to none, and we can promise you that all students will be challenged, supported, and inspired daily in all aspects of their school life.

We look forward to making that journey with you as we continue to dream big, work hard, and stay humble.

Mrs Matharu  
Headteacher

# Why Kingsthorpe College for Post 16?

Dear Student,

Students at Kingsthorpe College are always encouraged to Dream Big, Work Hard, and Stay Humble. To support students with this vision, we have a dedicated Post 16 team who work with students on a daily basis. It is our responsibility to ensure that you develop both the character and currency that you will need when you leave Kingsthorpe College at the age of 18.

Whether it is your choice to go to university, begin an apprenticeship or enter full-time employment, we will ensure that our students are prepared for the demands of the wider world. In order to achieve this you will receive extensive layers of support, guidance, and opportunities to prepare for this journey.

The Post 16 Centre is a building based away from the main school site and includes a designated common room for students to relax and study, and a separate silent study area for students to work without distraction. There are plenty of computers and laptops to access, and each student has access to a locker. Students also have access to a dedicated Post 16 art room, photography facilities, PC suite, recording studios and rooms for music students. All Year 12 students will be gifted a chromebook to aid future study.

The Post 16 curriculum provides students with the opportunity to study 26 level 3 qualifications that are from both academic and applied pathways. As you will see, the subjects are diverse and provide students with the opportunity to study a personalised pathway to prepare you for your journey when you leave Kingsthorpe College. We offer a diverse range of super curricular activities, that in recent years has included guest speakers such as: Football Association Chairman David Dein, magistrate and crown court judges, MPs and other political figures. Events also include the business breakfast, where over 50 local and national industries visited Kingsthorpe College to meet with our students. Students also have the option to take part in the Extended Project Qualification – a dissertation about a subject of personal preference which is worth UCAS points and will further enhance university applications.

We pride ourselves on the breadth of Level 3 courses which we offer, alongside the extra curricular opportunities available. The student perspectives later in this prospectus is also testimony to the support that is put in place to help you to achieve your goals and aspirations. On leaving Kingsthorpe College, students will not just celebrate academic achievement but will be well rounded individuals with leadership qualities, academic curiosity, independence, and resilience. We want our students to be the best they can possibly be by providing them with a range of opportunities that aim to support them in preparing them for the adult world and future employment.

I genuinely feel privileged to work with such a dedicated team who continuously get the best from our students both in terms of their academic and personal developments, and the students who have such drive and conviction to pursue their future goals.



# Welcome to Post 16



## Mr Murray: Head of Year 12



As Head of Year 12, my role is to oversee transition from Year 11 to Year 12. This involves ensuring the new students in Year 12 are aware of the Post 16 expectations, prepared to start learning new subjects and feel settled and comfortable in their new surroundings. Within this role, I also interview external applicants wishing to attend Kingsthorpe for A-level studies and reinforce our expectations to maintain a high standard throughout. Throughout the year there are several areas I oversee such as work experience, delivering assemblies, and supporting students using appropriate study skills for their subjects.

## Miss Mellor: Head of Year 13



I oversee the academic and personal wellbeing of Year 13 students. This involves monitoring attendance, punctuality and engagement. In my role, I oversee the UCAS process, checking applications, personal statements and references, as well as providing guidance for students who are applying for apprenticeships. We work closely with our careers advisor to ensure that each student is provided with tailored independent information to support students in the next steps of their journey. As part of the academic support that we offer in Post 16, I lead a Study Skills programme which is designed to teach and improve the strategies used to assist students in achieving the best possible grades and to prepare them with transferable skills for when they leave Kingsthorpe College.

# Welcome to Post 16

## Mrs De-Wit: Strategic Lead: Key Stage 5



I ensure that students within Post 16 have access to a quality of education that means they are prepared for the demands of their future endeavours. Our aim is to equip them with the knowledge, skills and confidence that will provide them with the currency needed in the next stage of their lives. With a focus on Post 16, I analyse learning and assessment practice at each data point to share key learning points and to coordinate individual support programmes, ensuring that this information is communicated effectively with all involved. I aim to use student voice across the year to ensure students opinions are heard; enabling us to act upon the feedback given and provide students with a high quality experience during their time at Kingsthorpe College.

## Mr Campbell-Julian: Deputy Head of Year 12 and 13



I support students with their independent learning. All students stay on-site during the College day, unless they are eligible for home study, and have the opportunity to work independently in the Post 16 Centre during designated periods. I enjoy supporting the students in developing their study skills, especially independent research. I also help students make their University choices and provide personalised support with UCAS applications and career aspirations.



## Our Staff

The key to the success of any workplace lies in the quality of the staff. Kingsthorpe College prides itself on having highly qualified, highly motivated professionals whose flair and imagination inspire young people in every way.

We are a staff who work well together. Our strength stems from the knowledge that we are all part of the same team; our success as a College derives from us all working to a common purpose in an open and collaborative way.

We know we are in a very privileged position to be able to work in a good school, and in such a positive environment with such wonderful young people and colleagues. We are committed to doing the very best we can for every young person.

# Our Facilities



We are extremely proud of the stunning facilities in our separate Post 16 area.

- A chromebook is gifted to all Year 12 students to aid future learning.
- £500 cash incentive for high flying students \*criteria applies
- Top of the range Wi-Fi and plenty of laptops to ensure constant online access.
- A common room featuring breakout seating for you to relax and study in a welcoming and contemporary environment.
- Two large study areas fully stocked with text books, academic magazines and journals as well as other useful resources.
- A meeting room for smaller group studies or meetings to take place.

You will also have full access to all facilities across the rest of the school, including:

- Access to a dedicated area of the College library
- A dedicated Art room exclusively for Post 16.
- A dedicated canteen serving area exclusively for Post 16.
- Photography facilities, including top of the range PCs and digital/manual cameras.
- Multiple rooms for music students to play and record in.
- Extensive range of sporting facilities.

# Our Curriculum

Admission to Post 16 at Kingsthorpe College requires sufficient qualifications for the courses you wish to study. At KC, you can opt either for an A-level or applied programme of study.

**The minimum entry requirements to join Kingsthorpe College Post 16 are for students to achieve:**

- \*A minimum of GCSE grade 4 (or equivalent) in at least 5 subjects
- \*A minimum of GCSE grade 4 in English Language
- \*A minimum of GCSE grade 4 in Maths

**Please note, that individual subject entry requirements for individual qualifications are included on the next page and you must gain these criteria to enrol in the Post 16.**

# Our Subject Entry Requirements



In addition to meeting the minimum entry requirements for Kingsthorpe College Post 16, you will also be required to meet the subject entry requirements for individual qualifications. The subject entry requirements are as follows:

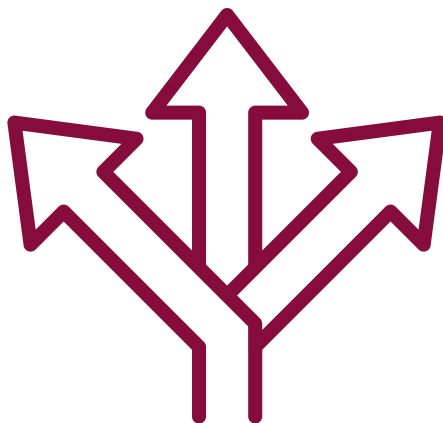
Subject	Subject Specific GCSE Result	English	Maths
Biology	6 in Biology, 5 in Chemistry and Physics	5	6
Business	Business level 2 Merit+ if studied	4	4
Chemistry	6 in Chemistry, 5 in Biology and Physics	5	6
Criminology		4	4
Dance	Dance level 2 Merit+	4	4
Drama	Drama level 2 Merit+	4	4
English Language	English Language grade 6+	5	5
English Literature	English Literature grade 6+	5	5
Fine Art	Art grade 5, must have studied either Art or Photography GCSE.	4	4
French	French grade 6+	5	5
Geography	Geography grade 6+	5	5
German	German grade 6+	5	5
Government & Politics		5	4
Health & Social Care	Health & Social Care level 2 Pass+ if studied. GCSE desired but not essential.	4	4
History	History grade 6+	5	5
ICT	ICT level 2 Merit+	4	4
Mathematics	Mathematics grade 7+	5	7
Music	Music Grade 5+ /level 2 Merit+	4	4
Philosophy & Ethics	Ethics Grade 5+ or another Hums subject 5+	5	5
Photography	Photography grade 5, must have studied Art or Photography GCSE.	4	4
Physics	Combined Science 6-6+ or Triple Science 6-6-6+	5	7
Psychology		5	5
Sociology	Sociology grade 5+ if studied at GCSE. GCSE sociology desired not essential.	5	5
Sport	Physical Education level 2 Merit+	4	4

Please note that each student application will be reviewed by Kingsthorpe College on a case by case basis. Where necessary, discretion may be used to review individual subject suitability.

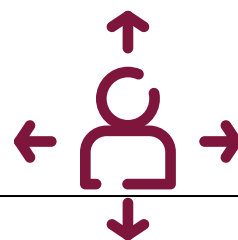


# Option Blocks

	A	B	C	D	E
	<b>You can pick 3 subjects across 5 option blocks</b>				
<b>Subjects</b>	Drama Maths Sociology Sport Photography	Chemistry French History ICT Psychology	Criminology English Literature German Music Physics	Art Dance Geography Government & Politics Health & Social Care Philosophy & Ethics	Biology Business Criminology English Language Psychology Core Maths GCSE resit Maths or English
<b>Important Information</b>	<ul style="list-style-type: none"> <li>• Entry to KC Post 16 is subject to achieving 5 grade 4's (including English and maths) or above in addition to meeting the subject entry requirements. Re-sit requirements of either English or maths may be considered.</li> <li>• Courses are subject to student numbers; any changes will be communicated with individuals.</li> <li>• Blue denotes Vocational Subjects</li> <li>• Extended Project Qualification is offered as an additional enrichment qualification.</li> <li>• Dance and Drama cannot be studied at the same time.</li> </ul>				



# Potential Career Paths



Example career paths	Subject Combinations				
IT, Cyber Security, Ethical Hacking	IT	Business	Psychology	Sociology	Philosophy and Ethics
Finance/Accounting /Business Studies	Government & Politics	Business	Maths	IT	Geography
Medicine	Physics	Chemistry	Biology	Maths	Psychology
Sciences – Pharmacy, Physiotherapy, Occupational Therapy, Radiography, Psychology, Biomedical Science, Forensic Science, Sport Science	Biology	Chemistry	Psychology	Health & Social Care	Sport
Engineering / Computer Science / Data Science	Maths	Physics	IT	Geography	Biology
Sports Coaching	Sport	Biology	Business	Health & Social Care	Sociology
Law, History, Paralegal	History	English Lit	Government & Politics	Psychology	French/ German
Creative Industries	Fine Art	Business Studies	Maths	IT	Photography
Architecture	Fine Art	Maths	Physics	History	English Literature
Environmental Studies / Engineering	Geography	Biology	Physics	Ethics	History
Art / Marketing / Social Media	Fine Art	Photography	History	English Literature	IT
Performance Industries	English Literature	Drama/ Dance	Business studies	History	Music
Events Management / Hospitality and Catering	Music	Business	IT	Geography	Drama
Logistics – Transport Planner, Aviation, Operations Manager, Buyer	Business	Philosophy	Geography	French/German	English Language/ Literature
English -Journalism, Editor, social media, Communication, Teaching, or English as a foreign language abroad	English Literature	English Language	French/ German	History	Geography

# Transition Support for Our Students



We work hard at involving students in the life of the College. Student leadership, involvement, and ownership are major contributors to achievement and progress and are evident in many ways. We try and keep it central to everything that we do.

Starting Post 16 is a big step for both students and their parents, so at Kingsthorpe College we work very hard to make this transfer as smooth as possible. To help with the transfer process, we hold an annual Post 16 Open Evening in November for prospective parents and students to see us in action.

We also have a number of activities throughout the year which Year 11 students attend so that they get more familiar with their new surroundings, subjects, and staff. In July, once the summer exam season is complete, we have Post 16 Transition days. These days are dedicated to enabling the Post 16 team to meet our new students and their teachers to discuss the weeks and months ahead and to make sure that we have all the information we need about individuals' progress, personal development, and any special needs.

Soon after students have started at Kingsthorpe College, we arrange a meeting for parents and carers to meet with tutors to discuss how the young person has settled in and to make sure that there is an opportunity to share anything with us before the first half term is over.

In addition we offer comprehensive tutor sessions and assemblies to develop key study skills alongside the chromebooks each student is gifted.

A dark blue, textured brushstroke graphic that tapers at both ends. Inside the brushstroke, the text "#TeamKC" is written in a white, cursive, handwritten-style font. The background of the entire page is a light blue gradient.

# Enrichment Opportunities

Our vast enrichment programme means that our students leave KC Post 16 feeling confident in working with a range of different people, being aware of how to be an active citizen in our community this is achieved with the backdrop of being able to have the opportunity to explore career opportunities and develop transferrable skills for life Post 18.

Our enrichment programme covers 3 key areas, Community, Work experience and Personal Development.

## Community

- Charity work and fundraising opportunities –
- Running key events within the school community such as Black History Month with events, Art work displays and assemblies.
- Peer mentoring opportunities with KS4 and 5, EAL and literacy support
- Opportunity to be school mental health ambassadors.
- Alumni opportunities

## Work experience

- Year 12 work experience placement
- Mock interview practice
- Speakers for schools
- Northampton UniConnect partnership opportunities
- Dales Willis apprenticeship workshops
- Opportunities with the Sutton Trust
- EPQ qualification
- Spring Pod- online work experience
- Access to a careers advisor

## Personal development

- Head student and tutor representative opportunities in the wider school structure
- Local university visits and UCAS fairs including Northampton, Nottingham and Cambridge
- Duke of Edinburgh Qualification
- Geology schools' competition
- First Aid course
- Yoga and mindfulness workshops
- Personal statement and UCAS workshops and support programme
- Northamptonshire Safer Road Alliance workshops on young driver awareness
- Core Maths qualification

## Contributions

Our students spend 1 hour per fortnight contributing to our school community. They select areas of interest as they develop key communication and workplace skills throughout the year whilst simultaneously giving back to a wide variety of areas within our community. Examples of contributions from this academic year include supporting the running of mock bar trial, EAL mentoring, paired reading, peer mentoring, lesson support, debate club, sports clubs, Year 11 academic mentoring, and IT/ Library support as well duties and litter picking of the school site.

# Enrichment Opportunities



## Aim Higher Programme

The KC Aim Higher Programme provides specialist guidance and enrichment opportunities to support progression to elite universities. The programme is aimed at the highest GCSE performers, who have the potential to succeed at a high level in their A Levels.

Students are identified for the Aim Higher Programme after a review of GCSE attainment and are those who have consistently shown the highest levels of performance in assessments, tests and / or examinations across the curriculum.

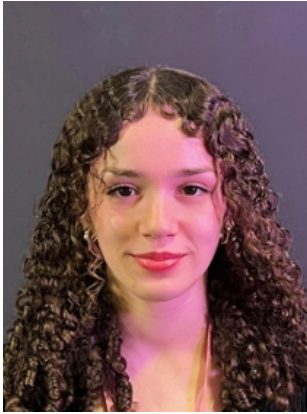
The most prestigious universities in the UK have extremely demanding entry requirements that often go above and beyond simply needing exceptional grades, and therefore this programme aims to develop you as an individual and ensure your application stands out above the rest.

Our highest performing students will have access to:

- Personalised support and guidance on making applications to the top universities.
- Extensive support with writing personal statements to make your application as strong as possible.
- Help with admissions tests such as TSA, LNAT, BMAT, UKCAT.
- Practice interviews for Oxbridge applicants.
- Guidance on extra-curricular activities that would strengthen an application, including debating, and appropriate work experience and volunteering.
- Opportunities to attend talks/workshops from external speakers representing the top universities.
- Visits to Russell Group universities.
- Opportunity to take part in the Extended Project Qualification (EPQ), an independent research project like a university dissertation.
- Updates on opportunities available outside of College, including open days, conferences and workshops.
- Support with applying for summer schools in a range of subjects.
- Attendance at the Higher Education Fair and Oxbridge Regional Conference.

If you wish to discuss this aspect of our provision, please contact Ms Mellor.

# Student Leadership Team



My name is Georgia, and I am delighted to have become one of the Head Students at Kingsthorpe College!

Being an English Literature, Drama, and Art student, I have always had a creative streak within me, as well as a determination to be caring and co-operative in all my work. This role has been something I've strived towards and having been a part of this school for over five years now, I feel I've experienced many of the daily highs and lows that students face. I know that I can learn through new challenges, and I will work hard to make sure that every voice is heard.

My main focus is to be a listener, and to be a guiding figure to help with the smaller and wider issues on a one-to-one basis. I aim to integrate the older and younger years, with more opportunities in mentoring/leadership roles, developing the older students' employability skills and making sure that the younger years feel settled and ready for their next steps and exams when the time comes. I will provide further help and support for the Year Elevens and Sixth-formers preparing for exams, as well as exploring the potential for more school trips, sports/unwind days, and extra-curricular activities for all students, to get the balance right between the hard work and enjoyment needed in school to thrive.

Hello, my name is Dmitrij and I am a Year 12 student. The subjects I take in Sixth Form are English Language, Geography, History, Russian and AS Maths. I wanted to become Head Student because I haven't always been on the right path, and I've spent the last few years working on turning my life around for the better. I believe that becoming Head Student is an opportunity to give back and provide the students of KC a better future.

Over the next year I want to create an Open Mentoring Programme for everyone in Years 7-11. This can help the younger students interact more with successful Sixth Form students, who can provide advice and guidance. In addition, I want to create a Post-16 Retention Programme to encourage Year 10 and 11 students to attend the KC Sixth Form after completing their GCSE's.

I'm looking forward to making peoples' suggestions and ideas a reality and having a positive impact on the school that I have been attending for almost six years.



My name is Rawdhah and I am a Year 12 student studying Chemistry, Biology, Geography and Maths AS. I am thrilled to be part of the Student Leadership team as Deputy Head Student. This role means a lot to me as I am ready to represent the student body in a positive way and be a role model. I know sometimes school can not be everyone's favourite so I would love to make everyone's experience at KC enjoyable and one to remember.

I aim on celebrating diversity and equality around the school and making the students aware about all the cultures around us in the school. This includes an annual culture day, Black History Month celebrations as well as the monthly celebrations of other cultures and social events.

I also aim on making it easier for students struggling with particular lessons to have a student subject ambassador and Sixth Form mentors to help them with studies. A lot of students have also suggested the increase in trips - these subject ambassadors may take suggestions from the students and pass it on back to the department.

My final aim is making sure every child has the greatest secondary school experience. I would love to introduce events to the school such as sports days and events of their choice where we can raise money to charities, in order to raise the awareness of things going on around the world as well as the profile of the school within the local community.



Hello, I'm Hamish and I take Chemistry, Maths and Physics at A-level. I'm excited to be Deputy Head Student as I want to use this as an opportunity to give back to the school that has helped me develop academically and personally over the last five and a half years.

However, I know first-hand that some aren't as lucky and find school to be an overwhelming place and are being brave everyday by just coming into school. It is these students that I want to help and will do this by prioritising the students' wellbeing in my role. I want to make sure that KC is a place all students can come to everyday and feel comfortable, safe and happy as I know that this is essential to excelling in all aspects of school life.

I'm also into sport and fitness so I understand the positive impacts this can have on your physical and mental health. It's for that reason that I want to push for more sports opportunities and competitions in school, with the hope of running a large annual sports day with stalls to raise money for a chosen cause. More generally, I'm here to listen, work alongside the students and reach the best solutions to make KC more enjoyable for everyone. I want to be someone students feel comfortable to go to if they have any concerns or are struggling with anything so I can play my part in making KC a better place.





# YEAR 12

# YEAR 13

## MEET THE TUTOR

Book a slot to meet your child's tutor.

TERM 1

- EPQ
- Zero Gravity
- Reflection and Review on summer exams and predicted grades
- UCAS applications
- Personal statement writing (Oxbridge personal statement masterclass)
- Discussion with tutors regarding Post 18 plans

TERM 1

TERM 2

## AFTERSCHOOL REVISION

Familiarise yourself with the afterschool revision sessions that are available.

TERM 2

- Revision and study skills sessions
- Parents' evening
- Mock exams
- Launch of Mentor Programme

## VISIT TO NORTHAMPTON UNI

Explore everything that Northampton University has to offer.

TERM 3

- Interview techniques
- UCAS deadline (30th January 2024)

TERM 3

TERM 4

## WORK EXPERIENCE

Arrange work experience with a local company, support given in school for this.

TERM 4

- Mock exams
- After school revision event
- Focus on apprenticeship applications

## EXAM REVISION

Assemblies, tutor time, dedicated study session given to support revision techniques.

TERM 5

- Revision sessions
- Exams
- Prom

TERM 5

TERM 6

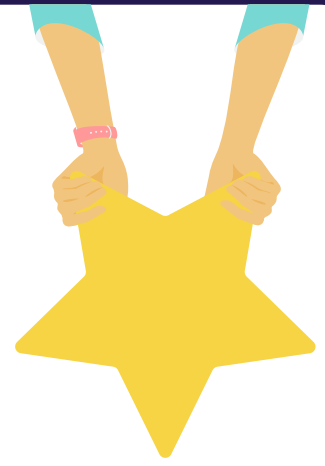
## MOCK EXAMS & FUTURE PLANS

By Term 6, UCAS and apprenticeship applications have started following the careers PHSE Sessions.

Summer

- Results' Day
- Alumni

# Our Values and Aims



Our core values at KC are:

- Aspiration
- Responsibility
- Respect
- Care

Our aims are:

- To maximise the life choices of our students by being the catalyst in students' artistic, athletic, and academic lives.
- To behave with optimism, determination, and thoughtfulness.
- To provide character and currency for our students to achieve success.
- To differentiate ourselves by empowering all those in our community to dream big, work hard, and stay humble.

**Aspiration, Responsibility, Respect, Care**

- To significantly stretch the performance and achievement of every student.
- To provide an exciting curriculum that makes learning enjoyable.
- To develop in each student a positive self-image and sense of worth.
- To promote high aspirations and high expectations.
- To develop respect for, and the recognition of, the needs of others.
- To enable each student to make informed decisions and exercise their rights and responsibilities.

To achieve all of this we will:

- Work in close partnership with students and their families.
- Engage effectively with other services in meeting all students' needs.
- Sustain an ordered community where expectations are consistently applied.
- Encourage students to take responsibility and develop leadership skills by working with each other.
- Promote enrichment activities which build on the curriculum and develop personal qualities.

Our Post 16 non-negotiables:

- Arrive to College and to all lessons on time.
- Have an attendance of above 96%.
- Adhere to the Post 16 Dress Code.
- Adhere to the Post 16 Centre Code of Conduct.
- Complete all homework and meet coursework deadlines.
- Show a positive attitude to learning.



Students who meet the expectations of the Post 16 team will be rewarded with Home Study.



# Post 16 Expectations



Post 16 students are role models for the lower school students and whilst we do not have a uniform, we have expectations on how our students present themselves. Students who fail to meet the dress code will be asked to return home and change regardless of time, distance or cost. A note from parents is required if a student will not be able to meet the dress code which needs to be presented to a member of duty staff at the gate as you come into school and then to tutors at the start of the day. Persistent failure to meet the dress code expectations will result in students being taken out of circulation in the first instance.

	
<p>Cardigans</p> <p>Collared shirt</p> <p>Jumper (with shirt beneath)</p> <p>Polo shirt</p> <p>Skirt or dress of modest length - if you are unsure whether they meet the criteria wear with a pair of opaque tights or leggings</p> <p>Smart shoes or boots</p> <p>Smart top with thick straps or capped blouse sleeves</p> <p>Tailored jacket or blazer</p> <p>Tailored trousers</p> <p>Tie</p>	<p>Denim or leather clothing or coats</p> <p>Flip-flops or sandals</p> <p>High heels</p> <p>Hoodies or sweatshirts</p> <p>Leggings (unless worn under a dress)</p> <p>Low cut, crop, strapless or vest tops</p> <p>See through materials</p> <p>Shirts or jumpers with brands</p> <p>Shorts</p> <p>Tracksuits</p> <p>Trainers (including black trainers)</p> <p>T-shirts</p> <p>Ugg or Dr Marten boots</p>

**Students are expected to wear their KC lanyard at all times**

Other considerations:

- No extreme hairstyles
- Excessive use of make-up will not be tolerated
- Students are not permitted to wear caps or hats
- All accessories should be kept to a minimum
- No facial piercings or ear plugs
- Mobile phones - only allowed to be used in Post 16 Centre.



# Pastoral Care

Strong, positive links between home and College will inevitably help students succeed. The focus of our pastoral structure is to support the development of all students towards achieving their potential as learners and as young people. We make sure that each young person is known and valued as an individual.

Each student is a member of a tutor group and has a personal tutor who helps them do well in their academic and social lives at College. It is the role of the tutor to provide stability, security and continuity of care.

If you wish to discuss anything about the progress of your young person with us, you are asked to contact their tutor or Head of Year in the first instance.

If you have something of a confidential nature which you would like to discuss with a senior member of staff, please contact Miss D Eddy or you can email [listening@kingsthorpecollege.org.uk](mailto:listening@kingsthorpecollege.org.uk)

We will keep you fully informed and involved in all aspects of school life and will work with you to make certain they are as happy and academically challenged as possible. The stronger and more mutually supportive our partnership is, the more successful each student will be.

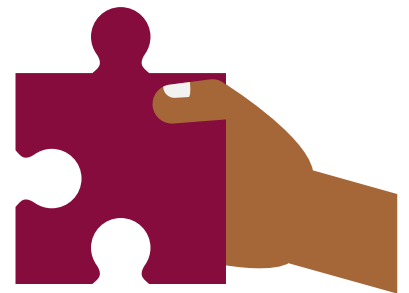
# Student Support

## Special Educational Needs

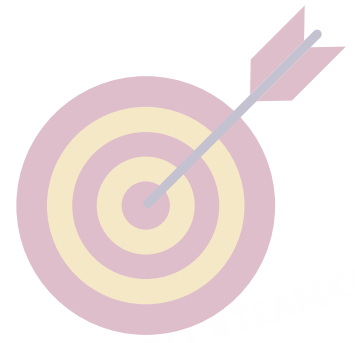
We recognise that individuals have different learning and physical needs. Where a special educational need is identified, we seek to provide the most appropriate support we can for the individual to enable them to make the best possible progress.

Where it becomes clear that some adaptation of the curriculum or environment is necessary to promote success, we will do everything we can to support this through full discussion with parents and appropriate agencies.

We are committed to supporting and challenging every child to be the very best they can be, and will endeavour to find a way to meet every child's needs. If you wish to discuss your young person's specific needs, please contact Mr David O'Leary.



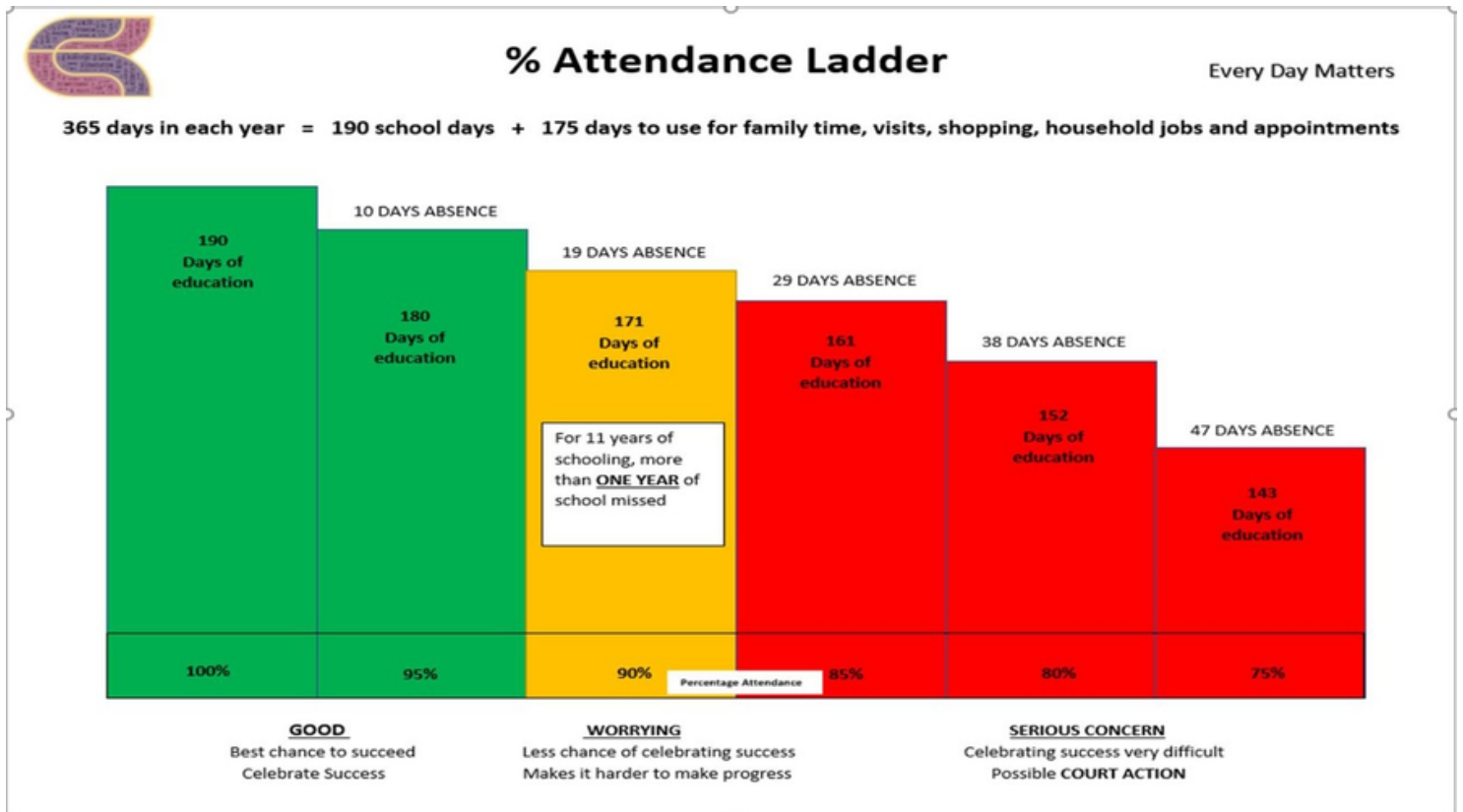
# Attendance



Attendance is a high priority at Kingsthorpe College as we firmly believe that excellent attendance underpins student progress and achievement. We challenge all of our students to achieve above the **College target of 96%**, and we assume parental support in maintaining these high standards. We work closely with support services and, where necessary, the statutory services of Educational Entitlement in order to support any student in need.

It is important to note that over the past 3 years we have seen an increase in the amount of students taking time out of school for holidays during term time. We implore you to take your holidays out of term time, which would therefore have no impact on student's education. We also ask you to think very carefully about allowing your young person to have the odd day off. It will impact upon their subject knowledge and they may fall behind their peers and struggle to catch up.

We understand and appreciate that there are occasions where illness or family crisis will impact on a student's attendance, and we will work closely with families to minimise disruption to learning. In cases of student absence, we ask that parents complete and submit a College request for student absence form, where advance warning can be given. We also ask that student absence is reported on the morning of absence by contacting our student absence line, which can be reached on the College contact number, 01604 716106 or emailing [Attendance.Team@Kingsthorpecollege.org.uk](mailto:Attendance.Team@Kingsthorpecollege.org.uk)



# A note from the Governing Body

**Community Governors:**

James Thomas  
Deborah Mattock

**Parent Governors:**

Fabrizio Pilotti  
Michael Norris  
Stephen Miller

**Headteacher Governor:**

Sharan Matharu

**Clerk:**

Teresa Elkin

**Staff Governors:**

Helen Noble  
Georgina Turner

**Co-opted Governors:**

Mohammed Mirza

The Governors of Kingsthorpe College are very proud to represent you and your opinions. We believe in the power of harnessing everyone's talents across the community in order to achieve outstanding outcomes. We are a very dedicated team of individuals who are totally committed to making sure every young person at Kingsthorpe College gets the best education possible. We hope you will support us in the leadership of our College and will contribute to its continued success.

Full Governors' meetings are held four times a year but much work is conducted through sub-committees, which meet at least twice a term with senior leaders. This enables us to keep all aspects of the College's operation under review and to keep building on our strengths.

In a prospectus such as this, we can only touch upon the many areas of the College that we are responsible for. However, we have very detailed policies covering all aspects of College life and should you wish to have copies of any policy document, please contact the College via [admin@kingsthorpecollege.org.uk](mailto:admin@kingsthorpecollege.org.uk)

All Governor correspondence should be addressed to:

The Clerk of Governors,  
Kingsthorpe College,  
Boughton Green Road,  
Kingsthorpe,  
Northampton  
NN2 7HR.



And finally...

If you require any further information do not hesitate to contact us  
[Post16.Team@kingsthorpecollege.org.uk](mailto:Post16.Team@kingsthorpecollege.org.uk) or



alternatively take a look at our Post 16 website  
<https://kingsthorpecollege.org.uk/post-16>

Application forms for internal and external students can be found by  
accessing <https://www.kingsthorpecollege.org.uk/application-for-Post-16>  
or scanning the QR code below:



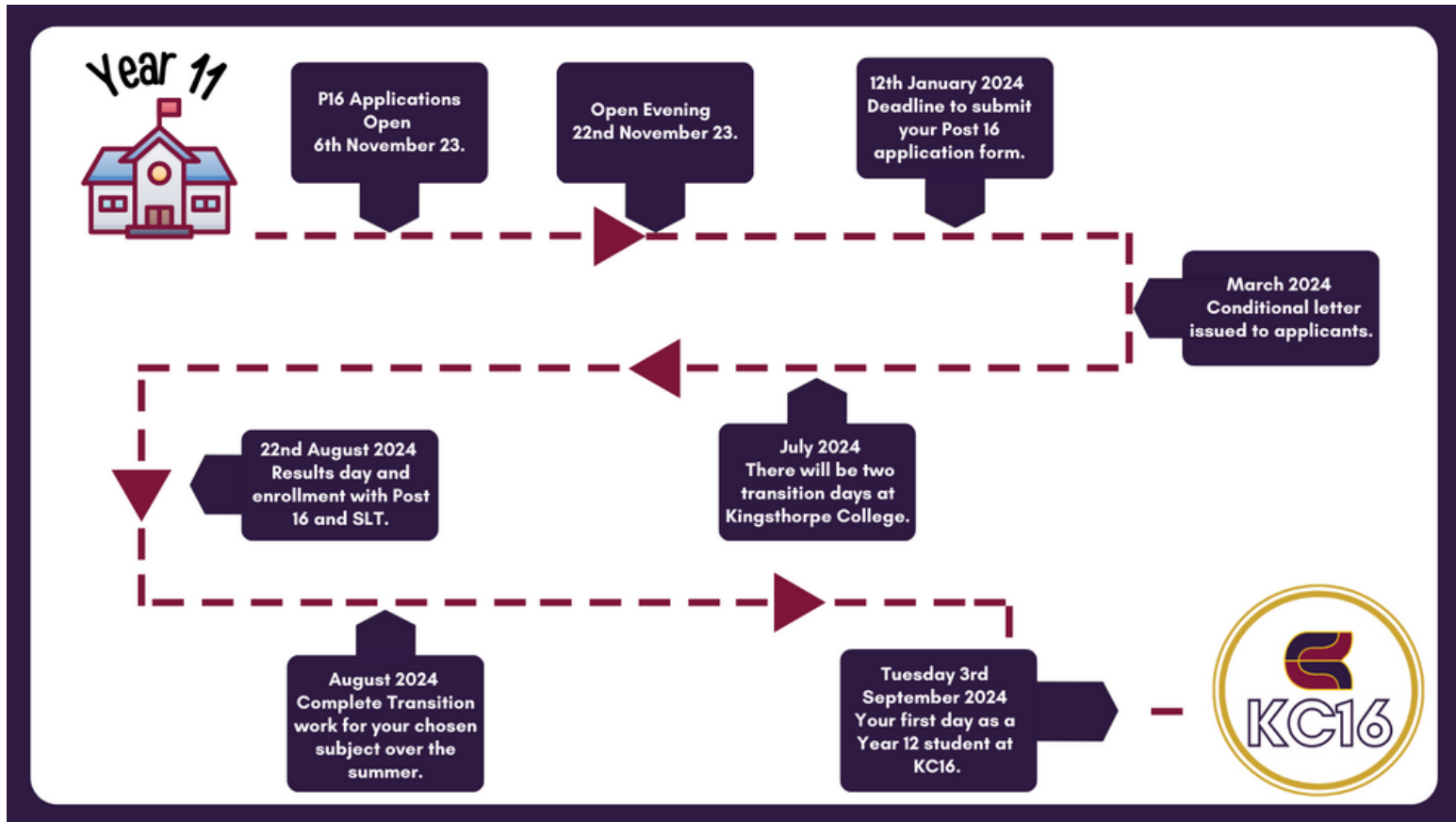
# KINGSTHORPE COLLEGE

**EVERYTHING  
IS POSSIBLE**

WE WILL ACHIEVE THIS THROUGH OUR CORE VALUES OF  
**ASPIRATION, RESPONSIBILITY, RESPECT AND CARE.**

THESE VALUES WILL BE SHOWN DAY TO DAY WHEN WE  
**DREAM BIG, WORK HARD AND STAY HUMBLE.**

# Post 16 Transition Timetable



## Next Stop:



Your Future

# #TeamKC

YEAR 12 SEPTEMBER 2024



# Kingsthorpe College

ASPIRATION | RESPONSIBILITY | RESPECT | CARE



Kingsthorpe College, Boughton Green Road,  
Northampton, NN2 7HR

01604 716106

[www.kingsthorpecollege.org.uk](http://www.kingsthorpecollege.org.uk)



@KingsthorpeCollege1



@KingsthorpeCo



QoE at Kingsthorpe College